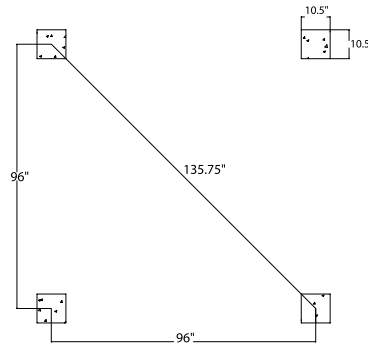


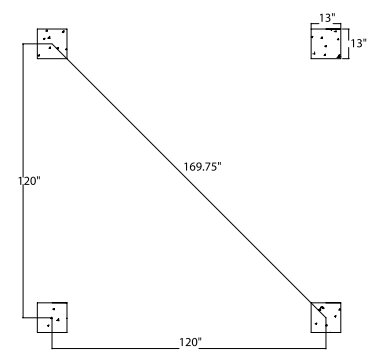
I. PERGOLA INSTALLATION INSTRUCTIONS

- Pergola Kits are made for decorative purposes only. Dixie-Pacific™ does NOT recommend attaching swings or any other structure directly to the pergola kit. This will void the warranty.
- Before installation, prime and paint the caps, bases/plinths and shafts with one coat of a high-quality exterior primer/paint prior to installation.
- Before installation, make sure all shafts are the same length. If field trimming is required, make sure to always trim from the bottom end only. Trim with an abrasive saw (Be sure to use personal protective wear). Finish the bottom of shaft with a rasp or sander to ensure an even load distribution around the entire circumference.
- All fiberglass columns used with decorative capitals should be trimmed flush above the bead/astagal. The capital should rest on the top of the bead/astagal and will allow for a proper fit. Columns must be trimmed in the field for this particular pergola application. A circular saw with an abrasive blade can be used to trim a column at the bead/astagal. (Make sure to use personal protective equipment.)
- Note: The cut at bead height loss will be greater than the height of the Roman Ionic Capital and Scamozzi Capital, therefore the overall length including the pergola decorative capital (Scamozzi or Roman Ionic), shaft, and base/plinth will be less than 8' (96").
- For an 8' x 8' pergola kit, a minimum of (4) 10 1/2" square concrete footers must be poured. The footers must be poured 8' on center to 8' on center of concrete footers (Diagonal is 135 3/4"). Concrete must be a minimum of 4,000 PSI and a minimum of 4" thick (See Figure 1). If desired, a complete concrete pad may be poured for pergola kit in lieu of pouring a concrete footer. For a 10' x 10' pergola kit, a minimum of (4) 13" square concrete footers must be poured. The footers must be poured 10' on center to 10' on center of concrete footers (Diagonal is 169 3/4"). Concrete must be a minimum of 4,000 PSI and a minimum of 4" thick (See Figure 2). If desired, a complete concrete pad may be poured for pergola kit in lieu of pouring a concrete footer.
- For 8' x 8' pergola kit, measuring 96" on center of concrete footer, use hammer drill with 3/4" drill bit and drill a 1 3/4" deep minimum hole (Be sure to use personal protective wear).
- For 10' x 10' pergola kit, measuring 120" on center of concrete footer, use hammer drill with 3/4" drill bit and drill a 1 3/4" deep minimum hole (Be sure to use personal protective wear). Clean hole of any dust or debris. Clean hole of any dust or debris.
- Place 3/8"-16 concrete anchor into the pre-drilled hole (threaded end first).
- Place 3/8"-16 x 10' threaded rod inside of shaft while lying horizontally on the ground.
- Place column in a vertical position over the hole with the concrete anchor.
- Using wood shims, elevate the shaft off of the concrete footer/pad so that you can insert the threaded rod into the concrete anchor (See Figure 3).
- After the threaded rod is secured into the concrete anchor, remove the wood shims making sure that the column shaft is centered directly over the concrete anchor and threaded rod.
- Slide the base/plinth over the top of the shaft allowing the base/plinth to drop to the concrete footer/pad.
- Secure the base/plinth to the concrete using appropriate fasteners. Be sure to pre-drill first. Caulk between shaft and base/plinth.
- Slide the Tuscan pergola capital over the top of the threaded rod allowing the capital to rest on the top of the shaft.
- Note: Pergola block will be separate from the Tuscan capital. Block must be attached to the capital using adhesive and non-corrosive screws. (See Figure 4). When installing a fiberglass column with a decorative capital, the column shaft should be lifted into place first, then the decorative capital to the shaft by drilling pilot holes through the shaft and into the base of the capital and secure with a toe nailing attachment.
- Note: Pergola block will be separate from the decorative capital. Block must be attached to the capital using adhesive and non-corrosive screws. (See Figure 4).
- Secure pergola capital to the top of the shaft using appropriate fasteners. Be sure to pre-drill first. Caulk between shaft and capital.
- Do NOT fill shaft with concrete or any other materials. This will void the warranty.
- Once pergola capital is attached, use 3/8" washers and 3/8"-16 hex nuts to tighten the capital and the column shaft to the ground.
- Place (1) lintel (beam) on each side of the pergola capital. Each column will have (2) lintels (beams) running across the top. Note: Make sure the lintels (beams) are centered equally over the columns having the same overhang on both sides (See Figure 5).
- Hold lintel (beams) in place over the capitals with clamps. While secure, pre-drill 1/2" holes in opposite corners of the capital through the lintel (Beam) and the pergola capital.
- Insert 3/8"-16 x 10" carriage bolts through the pre-drilled holes (lintel/beam and capital) inserting the threaded side of the bolt into the inside of the pergola (Head of bolt is showing from the outside.). Attach 3/8" washer and 3/8"-16 hex nuts to the carriage bolts. Do not over tighten.
- Starting with the center point of the lintels (beams), evenly space the rafters working from the inside center point out.
- Dry-fit and evenly space the 2" x 2" pergola clips along the top of the lintels (beams). Spacing for the pergola clips on the 8' x 8' will be 13 11/32" apart and spacing for the 10' x 10' will be 14 3/8" apart. Once spacing is determined, level and secure the clips with 3/4" screws (See Figures 6 and 7).
- Note: there will be (4) 2" x 2" clips per rafter.
- Dry-fit and place rafters into evenly spaced pergola clips (running perpendicular to the lintels (beams)).
- Before securing rafters to the pergola clips, make sure that the rafters are centered equally having the same overhang on both sides.
- Secure rafters to the pergola clips by using the PVC glue. Apply the glue to the top of the clip and lower the bottom of the rafter into the adhesive. Allow the adhesive to set following the manufacturer's guidelines.
- Apply PVC glue to the inside of the decorative rafter end caps and lintel (beam) end caps. Apply the end caps to each end of the rafters and lintels (beams). Allow the adhesive to set following the manufacturer's guidelines.
- Caulk between the cap and shaft and the base and shaft for a finished appearance. Paint the capital, shaft, and base/plinth with a final topcoat. Do NOT paint the rafters, lintels (beams), or end caps.



8'x8' PERGOLA KIT
CONCRETE FOOTER LAYOUT

Figure 1



10'x10' PERGOLA KIT
CONCRETE FOOTER LAYOUT

Figure 2

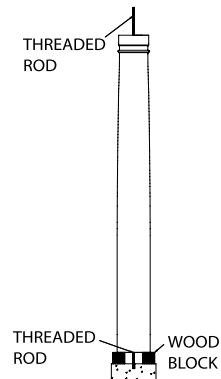


Figure 3

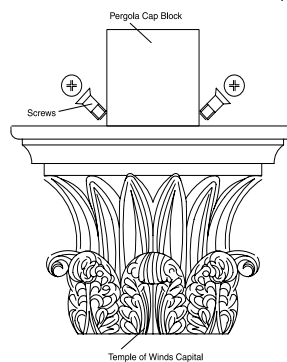


Figure 4 - Temple of Winds Capital

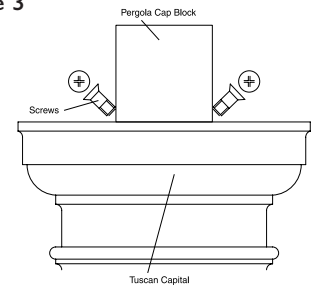


Figure 4 - Tuscan Capital

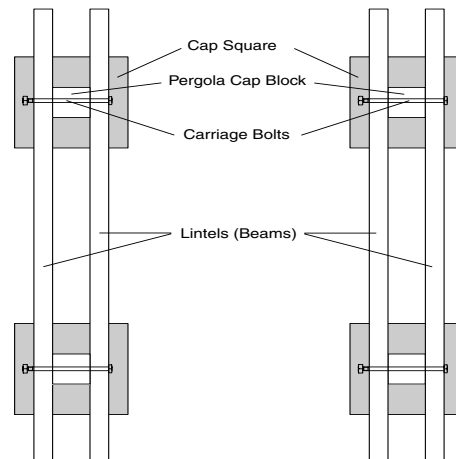
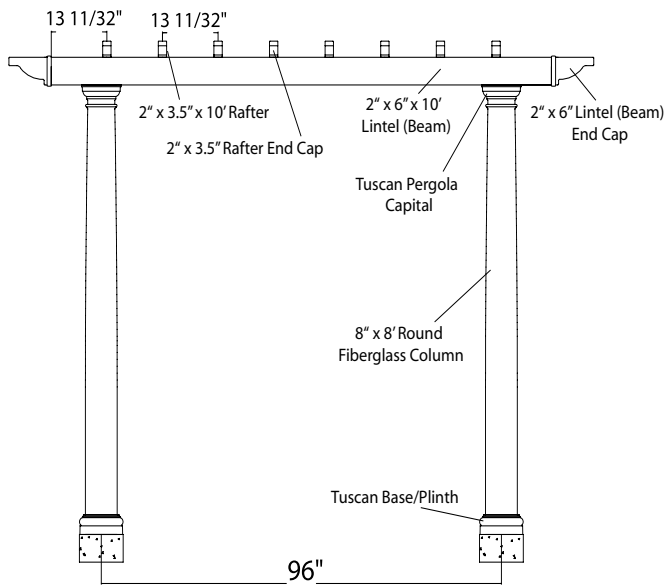
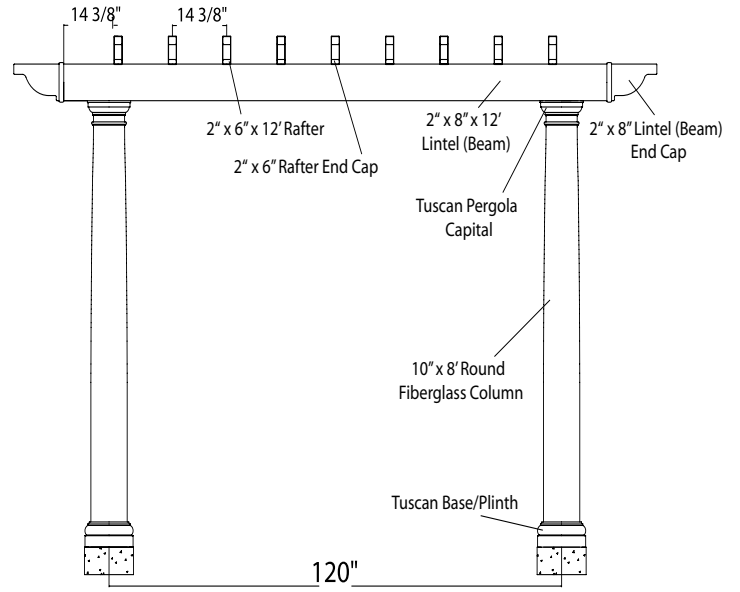


Figure 5



8'x8' PERGOLA KIT

Figure 6



10'x10' PERGOLA KIT

Figure 7